

**Denominazione prodotto:**  
*Product's name:*

POMPA/PUMP WP14000 5M T.SCHUKO

**Codici:**  
*Codes:*

28000

**Foto prodotto:**  
*Product's product:*L'immagine è puramente indicativa - *The product image is just an example.***Tipologia fluido:**  
*Fluid typology:*Acqua dolce/salata, pulita; non può essere utilizzata per il trattamento di acqua destinata al consumo umano  
*Clean fresh/salt water; cannot be used to purify water for human consumption.***Tipologia costruttiva:**  
*Construction typology:*Pompa centrifuga per piscine.  
*Swimming pools centrifugal pump.***Posizionamento:**  
*Positioning system:*Pompa sotto battente, non autoadescante  
*Pump under the head of water, no self-priming***Conformità e approvazioni:**  
*Conformity and approvals:*EN 60335-1, EN 60335-2-41, EN 62233  
EN 55014-1, EN 55014-2, EN 61000-3-2, 61000-3-3**Temperatura minima fluido:**  
*Minimum fluid temperature:*4 [°C]  
39.2 [°F]**Temperatura massima fluido:**  
*Maximum fluid temperature:*35 [°C]  
95 [°F]**Connessioni:**  
*Connections:*OUT: filettato/thread 1" 1/2 F (Ø 32/38 [mm] M)  
IN: filettato/thread 1" 1/2 F (Ø 32/38 [mm] M)**Portata:**  
*Flow-rate:*9.0 [m³/h]  
1980 [gph]**Prevalenza:**  
*Head:*10.0 [m]  
32.8 [ft]**Potenza assorbita (P1):**  
*Input power (P1):*370 [W]  
0.496 [hp]**Potenza di mandata (P<sub>hyd</sub>):**  
*Power output (P<sub>hyd</sub>):*105 [W]  
0.141 [hp]**Tensione nominale:**  
*Rated voltage:*

220 ÷ 240 [V]

**Corrente nominale:**  
*Rated current:*I<sub>max</sub> = - [mA]**Tipologia dell'alimentazione:**  
*Nature of supply:*

~ (AC) 50 [Hz]

**Classe isolamento elettrico:**  
*Electrical insulation class:*

I

**Grado di protezione IP:**  
*IP protection rate:*

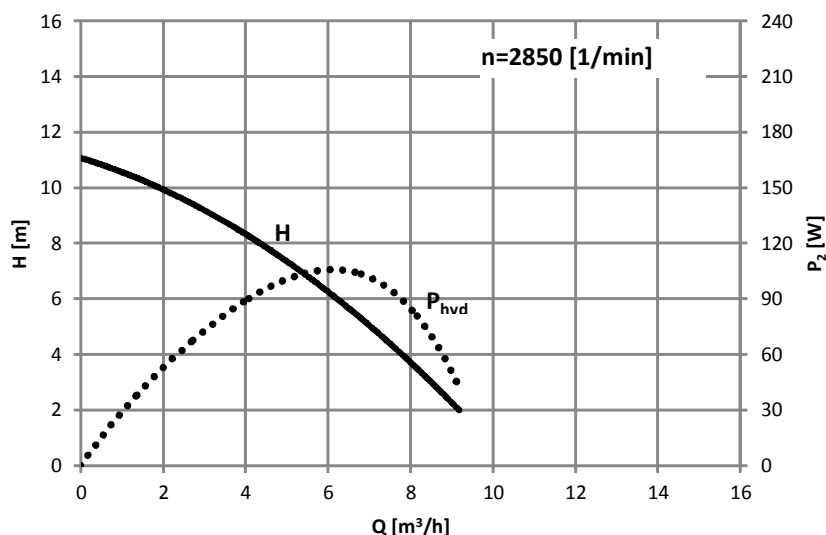
IPX5

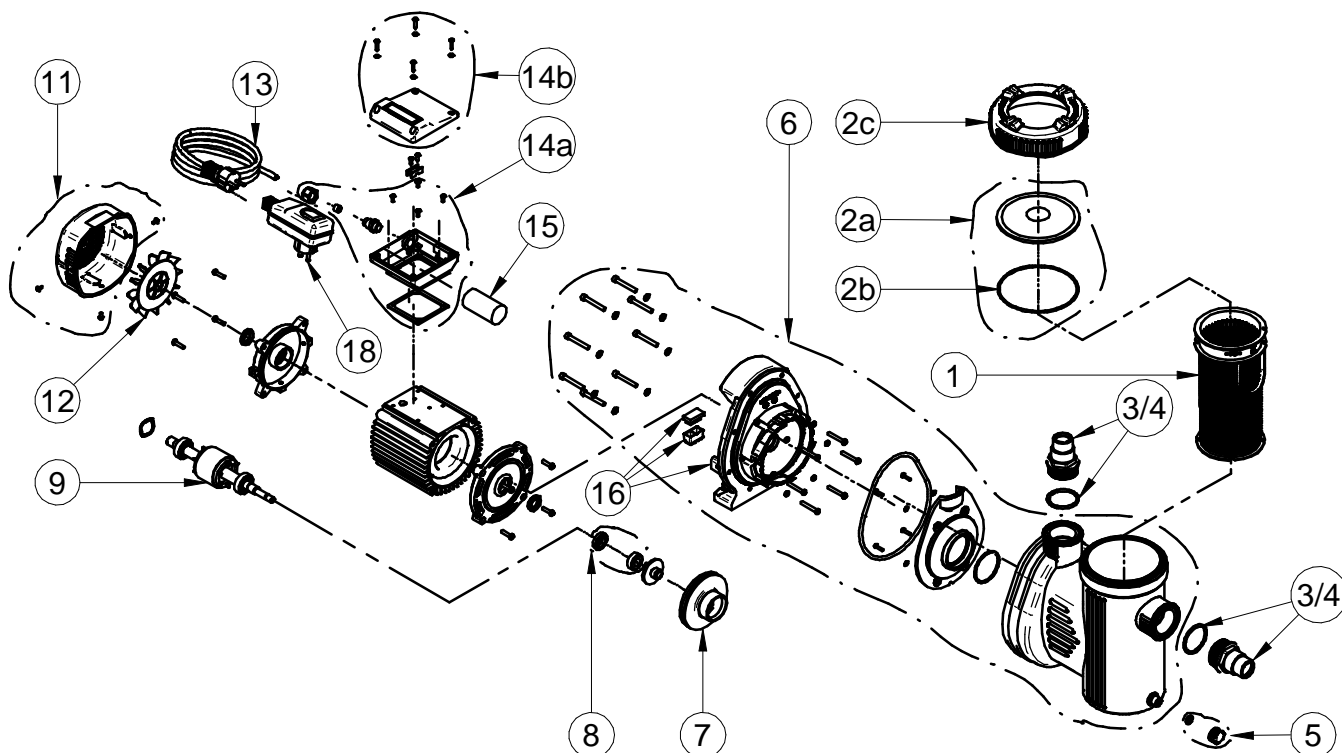
**Cavo:**  
*Cable:*

H05RN-F 3G1,0

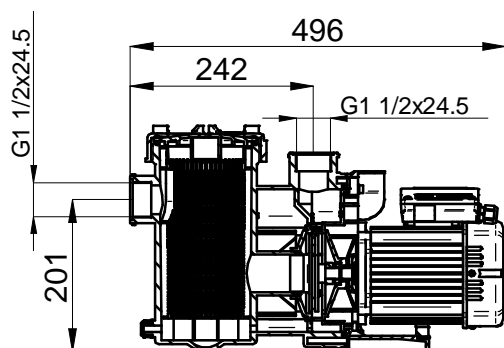
lunghezza: 5 [m]  
length: 16.4 [ft]**Spina:**  
*Plug:*Europa (Shuko)  
European (Shuko)

Standard: CEE 7/7 Water Proof

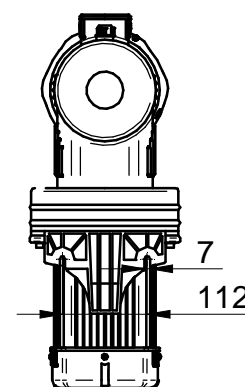
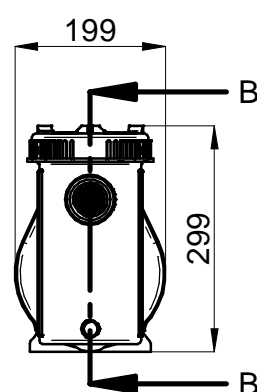




#	Codice Prodotto/Product Code	Descrizione/Description
1	XQ708I13	Cestello prefiltro/Pre filter basket
2a	XQ710I13	Coperchio prefiltro con o-ring/Lid prefilter with o-ring
2b	XQ700I13	Oring prefiltro/Pre-filter o-ring
2c	XQ709I13	Ghiera/Closing ring
3	XQ711I10	PORTAG./HOSE FITTING W/O-RING 1,5"D32/38
4	XQ711I20	PORTAGOMMA/HOSE FITTING W/O-RING 1,5"D38
5	XQ712I13	TAPPO PREFILTRO CON O-RING/PREFILTER PLUG WITH O-RING
6	XQ713I13	Camera girante con prefiltro/Impeller chamber with pre-filter
7	XQ714I13	SET GIRANTE/SET IMPELLER H4.8 MM WP14000
8	XQ715I13	TENUTA TIPO BT-AR 14S
9	XQ716I13	Set rotore/Rotor set WP14000
11	XQ718I13	Carter ventola con viti/Fan cover with screw
12	XQ719I13	Ventola di raffreddamento/Fan D. WP
13	XQ720I10	CAVO H07 CAVO H07RNF 3X1 5m SHUKO P.PP10-SP10/15
14a+14b	XQ721I10	Set scatola collegamenti/Capacitor box
15	XQ722I13	Condensatore/Capacitor 8 Microf C/F
16	XQ723I13	Set base WP
18	2500007	SALVAVITA/RCD SECURITY DEV.30MA SHUCKO



SEZIONE/SECTION B-B


Sede viti  
Screws seat